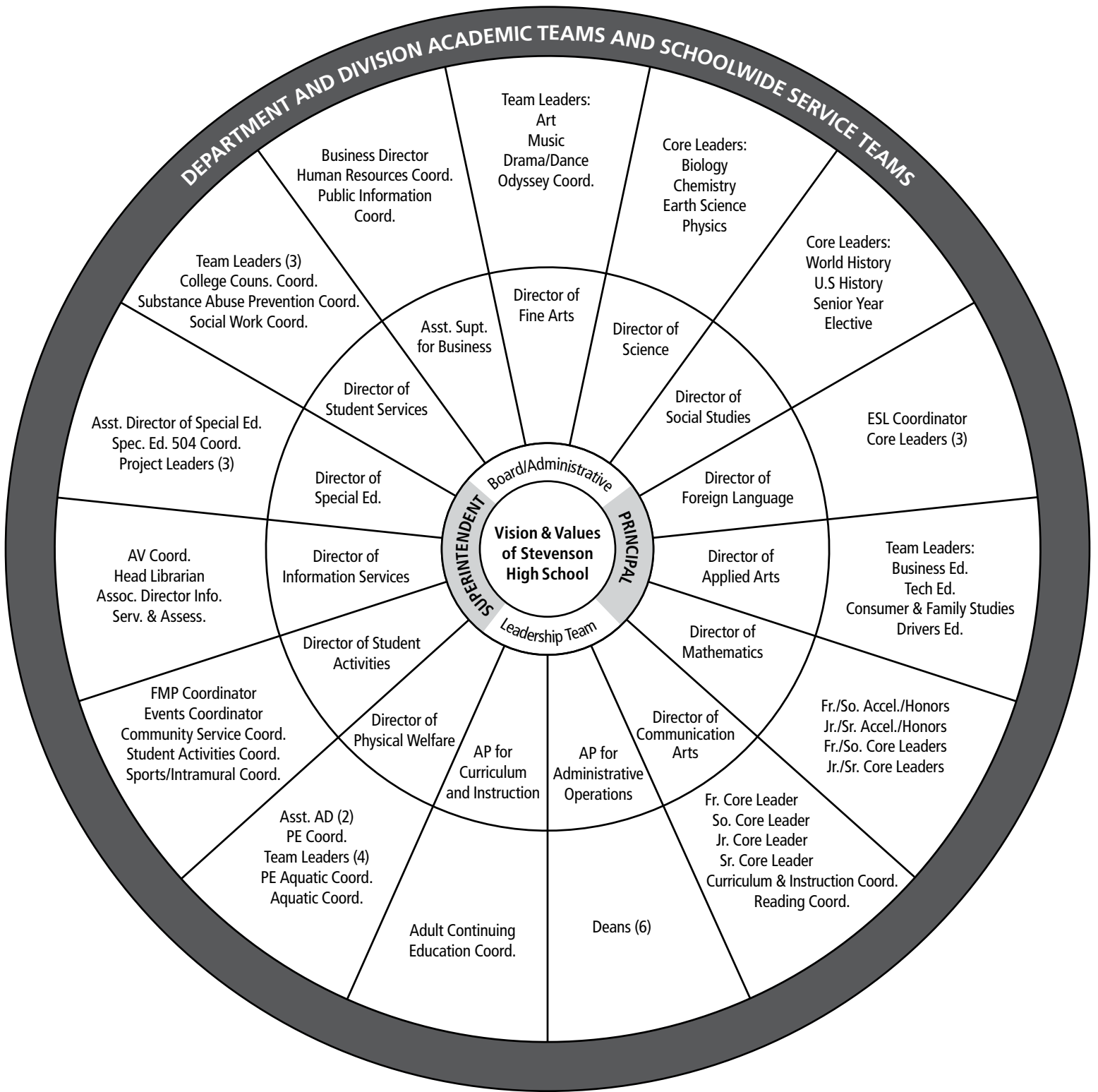


Stevenson High School District 125 Leadership Structure



Note: The Board/Administrative Leadership Team consists of 7 board members, 12 directors, 2 assistant principals, the principal, assistant superintendent for business, and the superintendent. Each division has a team of leaders who, in turn, influence and are influenced by the outer circle of division teams. Rather than a top-down structure, this model reflects the ideal of reciprocal adult relationships, as ideas and actions can flow from the outer circle to the inner circle and back again. Ideas within any of the circles can move across division areas.